

| Ibizan Hounds | | 2020 Final | | | | | | | | | | | | | |
|---|-------|------------|-------|-------|-------|-------|-------|--------|-------|-------|-------|-------|-------|---|--|
| Low Entry Breed | | | | | | | | | | | | | | | |
| Metric | 2008 | 2009 | 2010 | 2011 | 2012 | 2013 | 2014 | 2015 | 2016 | 2017 | 2018 | 2019 | 2020 | Notes | |
| Registered Litters | 23 | 19 | 14 | 21 | 25 | 16 | 19 | 12 | 19 | 9 | 20 | 12 | 14 | # AKC litters registered each year | |
| Litter Complement | 159 | 134 | 77 | 112 | 132 | 101 | 102 | 52 | 123 | 69 | 104 | 72 | 74 | # Pups in each year's litters (known as the "Complement") | |
| Average Complement | 6.91 | 7.05 | 5.50 | 5.33 | 5.28 | 6.31 | 5.37 | 4.33 | 6.47 | 7.67 | 5.20 | 6.00 | 5.29 | Average # of pups per litter | |
| Individually Registered Pups (to date) | 130 | 108 | 66 | 105 | 117 | 93 | 90 | 51 | 121 | 67 | 100 | 64 | 54 | # Pups from each year's litters individually registered (to date) | |
| Actual Return Rate (to date) | 81.8% | 80.6% | 85.7% | 93.8% | 88.6% | 92.1% | 88.2% | 98.1% | 98.4% | 97.1% | 96.2% | 88.9% | 73.0% | % Pups from each year's litters individually registered (to date) | |
| Limited Registrations (to date) | 8 | 9 | 7 | 5 | 14 | 8 | 4 | 1 | 17 | 14 | 6 | 6 | 1 | # Limited Registrations from each year's litters (to date) | |
| % Complement Registered Limited (to date) | 5.0% | 6.7% | 9.1% | 4.5% | 10.6% | 7.9% | 3.9% | 1.9% | 13.8% | 20.3% | 5.8% | 8.3% | 1.4% | % Pups from each year's litters Registered as Limited (to date) | |
| Revoked Limited (to date) | - | 2 | 3 | - | 1 | - | - | - | 3 | 1 | - | - | - | # Revoked Limited Dogs from each year's litters (to date) | |
| Litters from Revoked Limited (to date) | - | 2 | 2 | - | 1 | - | - | - | 2 | 1 | - | - | 1 | Litters involving each year's Revoked Limited (to date) | |
| Complement Bitches Bred | 16 | 13 | 9 | 12 | 13 | 15 | 12 | 6 | 1 | 2 | - | - | - | Bitches from each year's litters that have been bred (to date) | |
| Complement Dogs Bred | 9 | 10 | 6 | 7 | 8 | 5 | 6 | 1 | 11 | 1 | 2 | - | - | Males from each year's litters that have been bred (to date) | |
| Total Complement Bred (to date) | 25 | 23 | 15 | 19 | 21 | 20 | 18 | 7 | 12 | 3 | 2 | - | - | Total from each year's litters that have been bred (to date) | |
| % Complement Bred (to date) | 15.7% | 17.2% | 19.5% | 17.0% | 15.9% | 19.8% | 17.6% | 13.5% | 9.8% | 4.3% | 1.9% | 0.0% | 0.0% | % of each year's litters that have been bred (to date) | |
| Complement Bitches in Conformation | 50 | 41 | 23 | 37 | 44 | 44 | 39 | 27 | 46 | 24 | 50 | 20 | 16 | # Bitches from each year's litters in Conformation (to date) | |
| Complement Dogs in Conformation | 37 | 32 | 17 | 38 | 46 | 32 | 31 | 16 | 42 | 15 | 29 | 17 | 11 | # Males from each year's litters in Conformation (to date) | |
| Total Complement in Conformation (to date) | 87 | 73 | 40 | 75 | 90 | 76 | 70 | 43 | 88 | 39 | 79 | 37 | 27 | Total from each year's litters in Conformation (to date) | |
| % Complement in Conformation (to date) | 54.7% | 54.5% | 51.9% | 67.0% | 68.2% | 75.2% | 68.6% | 82.7% | 71.5% | 56.5% | 76.0% | 51.4% | 36.5% | % of each year's litters in Conformation (to date) | |
| Total Complement in Companion (to date) | 2 | 3 | - | 7 | 8 | 9 | 7 | 6 | 8 | 3 | 5 | 2 | - | Total from each year's litters in Companion (to date) | |
| % Complement in Companion (to date) | 1.26% | 2.24% | 0.00% | 6.25% | 6.06% | 8.91% | 6.86% | 11.54% | 6.50% | 4.35% | 4.81% | 2.78% | 0.00% | % of each year's litters in Companion (to date) | |
| Total Complement Placing in Performance (to date) | 44 | 38 | 20 | 35 | 55 | 47 | 37 | 21 | 66 | 22 | 42 | 10 | 4 | Total from each year's litters placing in Performance (to date) | |
| % Complement Placing in Performance (to date) | 27.7% | 28.4% | 26.0% | 31.3% | 41.7% | 46.5% | 36.3% | 40.4% | 53.7% | 31.9% | 40.4% | 13.9% | 5.4% | % of each year's litters placing in Performance (to date) | |

| | | | | | | | | | | | | | | |
|---|-----|-------|--------|--------|--------|-------|-------|-------|--------|-------|-------|--------|--------|--|
| AKC Dog Registrations | 142 | 104 | 89 | 93 | 115 | 92 | 88 | 67 | 96 | 77 | 113 | 69 | 68 | # Registered from AKC Litters during each year |
| FSS Registrations | - | - | - | - | - | - | - | - | - | - | - | - | - | # of FSS Dog Registrations each year |
| Conditional Registrations | - | - | - | - | - | - | - | - | - | - | - | - | - | # of Conditional Registrations each year |
| Open Registrations | - | - | - | - | - | - | - | - | - | - | - | - | - | # of Open Registrations each year |
| Foreign Registrations | 4 | 1 | 2 | 3 | 4 | 3 | 5 | 7 | 13 | 4 | 6 | 2 | 3 | # of Foreign-born Registrations each year |
| Total Dogs Registered | 146 | 105 | 91 | 96 | 119 | 95 | 93 | 74 | 109 | 81 | 119 | 71 | 71 | Total Dog Registrations each year |
| Unique Bitches Bred (each year) | 23 | 19 | 14 | 21 | 24 | 16 | 18 | 12 | 19 | 9 | 19 | 11 | 13 | Unique # bitches bred each year |
| Unique Dogs Bred (each year) | 20 | 19 | 13 | 19 | 22 | 16 | 17 | 12 | 17 | 8 | 20 | 12 | 12 | Unique # males bred each year |
| Total Bred (each year) | 43 | 38 | 27 | 40 | 46 | 32 | 35 | 24 | 36 | 17 | 39 | 23 | 25 | Unique # bred each year |
| Unique Bitches in Conformation (each year) | 150 | 156 | 153 | 141 | 157 | 143 | 158 | 150 | 146 | 149 | 166 | 146 | 117 | Unique # of bitches in Conformation each year |
| Unique Dogs in Conformation (each year) | 117 | 113 | 110 | 99 | 124 | 125 | 121 | 110 | 117 | 113 | 112 | 104 | 72 | Unique # of males in Conformation each year |
| Total Unique in Conformation (each year) | 267 | 269 | 263 | 240 | 281 | 268 | 279 | 260 | 263 | 262 | 278 | 250 | 189 | Unique # in Conformation each year |
| % Change Conformation | | 0.7% | -2.2% | -8.7% | 17.1% | -4.6% | 4.1% | -6.8% | 1.2% | -0.4% | 6.1% | -10.1% | -24.4% | YOY % Change Conformation total dogs |
| Unique Bitches in Companion (each year) | 8 | 6 | 7 | 5 | 3 | 7 | 8 | 10 | 7 | 9 | 13 | 15 | 11 | Unique # of bitches in Companion each year |
| Unique Dogs in Companion (each year) | 6 | 9 | 6 | 4 | 5 | 4 | 7 | 10 | 9 | 6 | 8 | 11 | 4 | Unique # of males in Companion each year |
| Total Unique in Companion (each year) | 14 | 15 | 13 | 9 | 8 | 11 | 15 | 20 | 16 | 15 | 21 | 26 | 15 | Unique # in Companion each year |
| % Change Companion | | 7.1% | -13.3% | -30.8% | -11.1% | 37.5% | 36.4% | 33.3% | -20.0% | -6.3% | 40.0% | 23.8% | -42.3% | YOY % Change Companion total dogs |
| Unique Bitches Placing in Performance (each year) | 48 | 52 | 59 | 66 | 70 | 79 | 93 | 84 | 83 | 81 | 100 | 108 | 82 | Unique # of bitches placing in Performance each year |
| Unique Dogs Placing in Performance (each year) | 39 | 49 | 50 | 43 | 52 | 61 | 63 | 65 | 53 | 67 | 72 | 65 | 34 | Unique # of males placing in Performance each year |
| Total Unique Placing in Performance (each year) | 87 | 101 | 109 | 109 | 122 | 140 | 156 | 149 | 136 | 148 | 172 | 173 | 116 | Unique # placing in Performance each year |
| % Change Performance | | 16.1% | 7.9% | 0.0% | 11.9% | 14.8% | 11.4% | -4.5% | -8.7% | 8.8% | 16.2% | 0.6% | -32.9% | YOY % Change Performance total dogs placing |

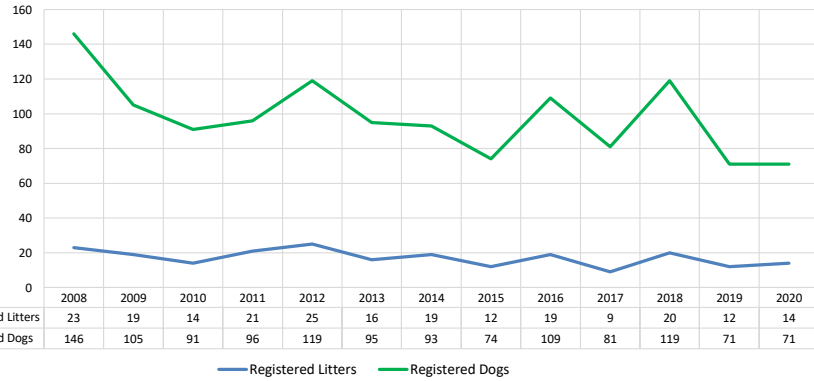
| % Change YOY | 2008 | 2009 | 2010 | 2011 | 2012 | 2013 | 2014 | 2015 | 2016 | 2017 | 2018 | 2019 | 2020 | |
|--------------------|------|--------|--------|-------|-------|--------|-------|--------|--------|--------|--------|--------|-------|---|
| Registered Litters | N/A | -17.4% | -26.3% | 50.0% | 19.0% | -36.0% | 18.8% | -36.8% | 58.3% | -52.6% | 122.2% | -40.0% | 16.7% | These %'s are calculated to show the change each year from the previous year. |
| Litter Complement | N/A | -15.7% | -42.5% | 45.5% | 17.9% | -23.5% | 1.0% | -49.0% | 136.5% | -43.9% | 50.7% | -30.8% | 2.8% | |
| Registered Dogs | N/A | -28.1% | -13.3% | 5.5% | 24.0% | -20.2% | 0.0% | -20.4% | 47.3% | -25.7% | 46.9% | -40.3% | 0.0% | |

| % Change Relative 2008 | 2008 | 2009 | 2010 | 2011 | 2012 | 2013 | 2014 | 2015 | 2016 | 2017 | 2018 | 2019 | 2020 | |
|------------------------|------|--------|--------|--------|--------|--------|--------|--------|--------|--------|--------|--------|--------|---|
| Registered Litters | 0.0% | -17.4% | -39.1% | -8.7% | 8.7% | -30.4% | -17.4% | -47.8% | -17.4% | -60.9% | -13.0% | -47.8% | -39.1% | These %'s are calculated to show the change each year compared to 2008. |
| Litter Complement | 0.0% | -15.7% | -51.6% | -29.6% | -17.0% | -36.5% | -35.8% | -67.3% | -22.6% | -56.6% | -34.6% | -54.7% | -53.5% | |
| Registered Dogs | 0.0% | -28.1% | -37.7% | -34.2% | -18.5% | -34.9% | -36.3% | -49.3% | -25.3% | -44.5% | -18.5% | -51.4% | -51.4% | |

Ibizan Hounds

2020 Final

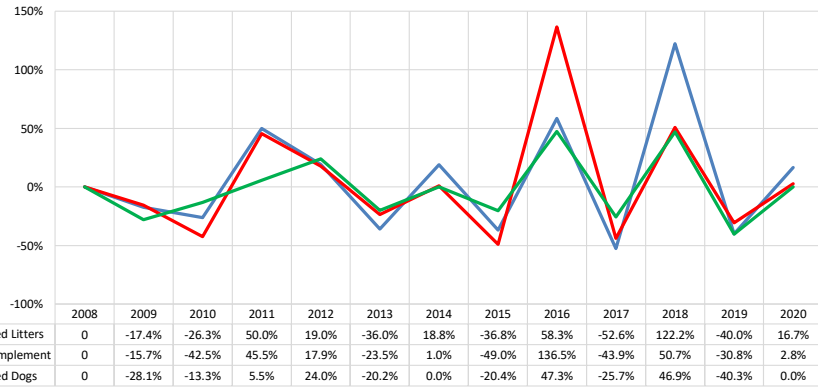
AKC Dog & Litter Registrations



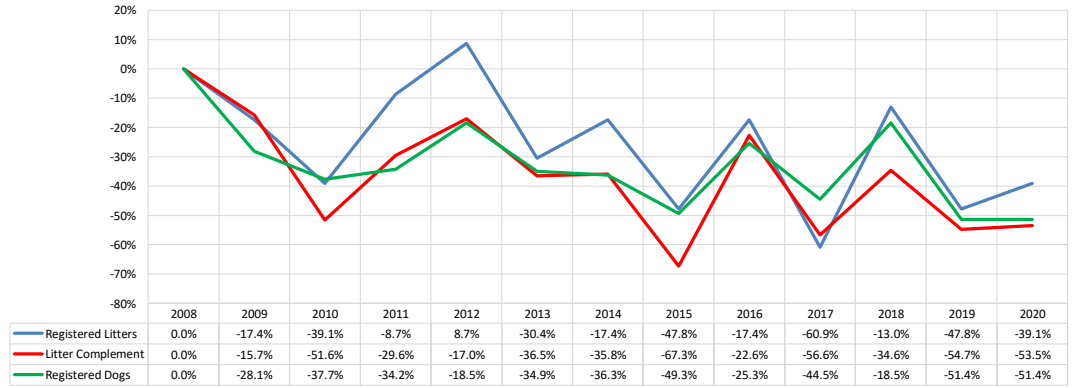
% of Each Year's Litter Complement that were Eventually Registered



% Change from Previous Year (YOY)

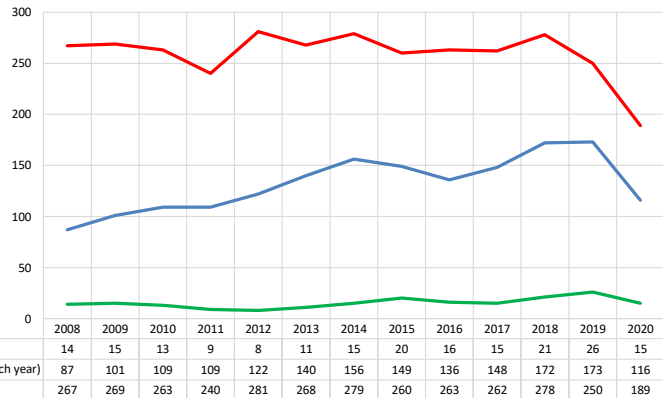


% Change Relative to 2008



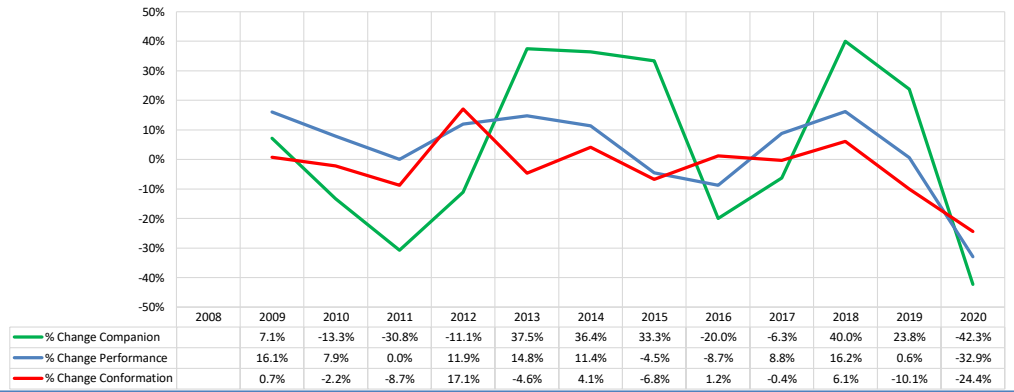
Ibizan Hounds

Competing: Total Unique Dogs by Sport Each Year

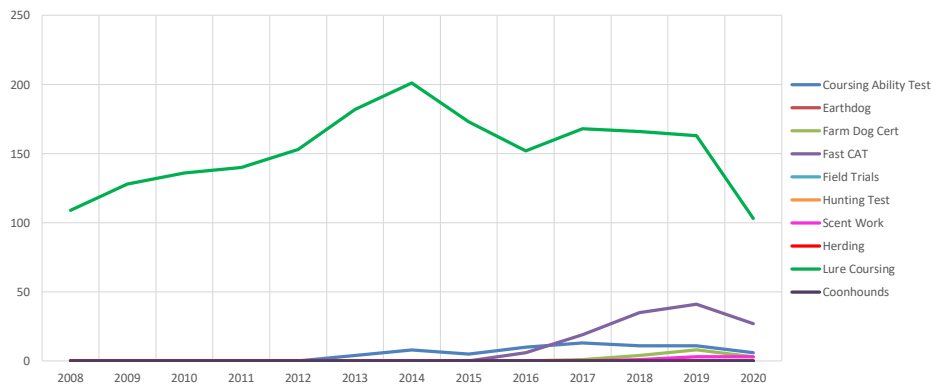


2020 Final

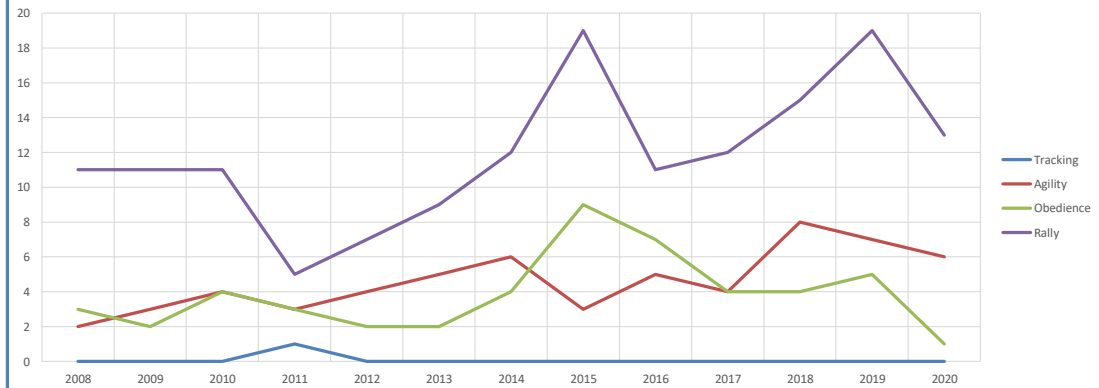
Competing: % Change Unique Total Dogs Year over Year by Sport



Performance: Total Unique Dogs Placing



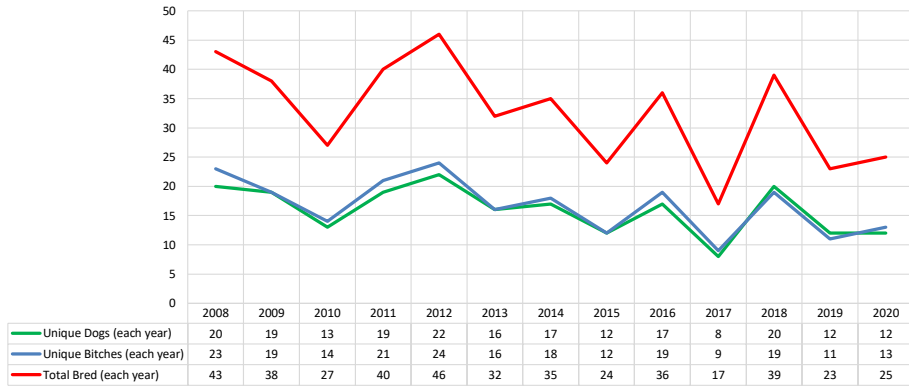
Companion: Total Unique Dogs Entered



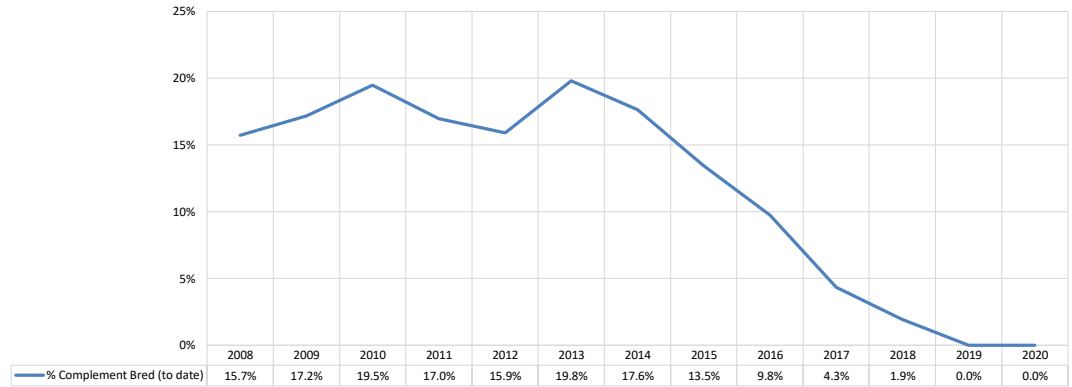
Ibizan Hounds

2020 Final

Breeding: Unique Individual Dogs & Bitches Bred Each Year



% of Each Year's Litter Complement that have been Bred (to date)



Competing: % of Each Year's Litter Complement in Competition

